

PLAN

Specifications:
ASTM C478 and AASHTO M 199

Design Properties:
- SCC Concrete
4900 PSI @ 28 days.
- Steel Strength: 60,000psi (Grade 60)

Flatops and Base Slabs are
Designed for AASHTO HS-20
Wheel Loading.



MANHOLE 72" ID MONOLITHIC BASE



Details:
8" Thick Floor for Depths up to 12ft
12" Thick Floor for Depths from 12ft - 30ft

BASE REINFORCEMENT:

Base Walls:

1 Mat of 4x8 0.226/0.164 Welded Wire Mesh Centered in Wall,

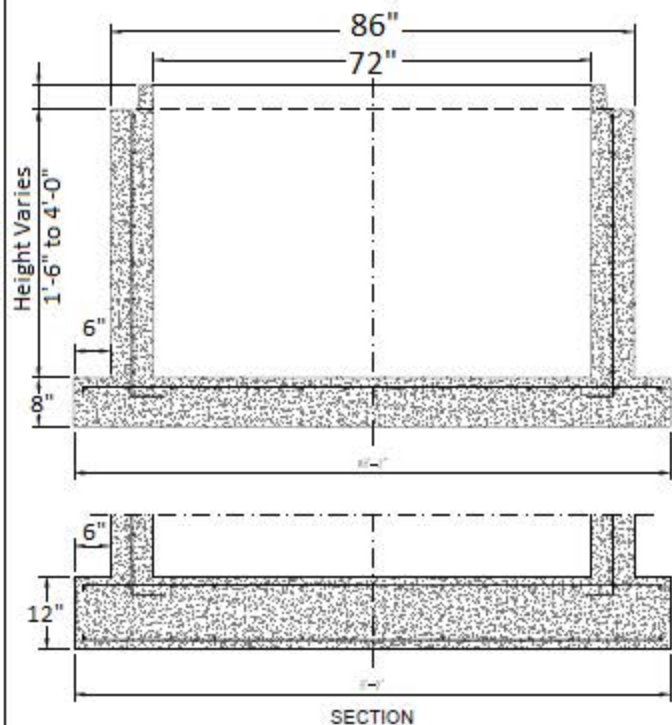
8" Base Floor:

#5 Rebar @ 8" O.C.E.W., 1 1/4" Off Top

12" Base Floor: 2 Mats

Top Mat: #5 Rebar @ 8" O.C.E.W., 1 1/4" Off Top

Bottom Mat: #4 Rebar @ 12" O.C.E.W. @ 1 1/2" Off Bottom.



SECTION



HA PRECAST Inc.

140 W Castellano Dr. El Paso, Texas

Project:

Date:

MANHOLE 72" ID MONOLITHIC BASE

Contractor:

HA Precast
Manufacturer